

## Using Decoupling Capacitors

**Author: Cypress**

**Associated Project: No**

**Associated Part Family: HOTLink® Transmitter/Receiver**

**Software Version: N/A**

**Associated Application Notes: [AN1162](#)**

AN1032 provides recommendations on the use of decoupling capacitors for the HOTLink family of data communication products.

### Introduction

Network analysis is used to prove that the conventional recommendation of using widely spaced values can, in many circumstances, cause less than ideal operation. Simpler, more reliable designs will often result from following the design guidelines of this note.

### The Problem

Faster edges, more sensitive devices, and higher clock rates all demand good decoupling of the power supplies.

### Decoupling

Decoupling is the process of breaking coupling between portions of systems and circuits to ensure proper operation.

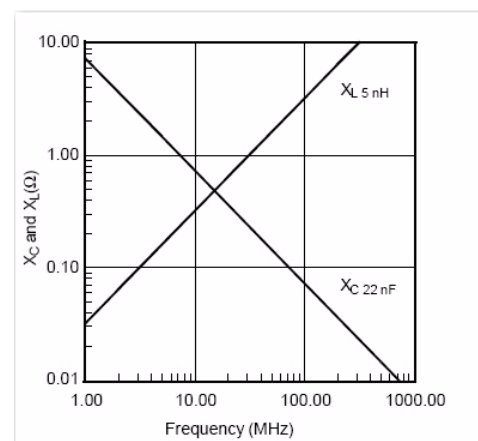
### Bypassing

Bypassing is the practice of adding a low-impedance path to shunt transient energy to ground at the source. It is required for proper decoupling.

Design practices that work for lower system speeds and slower logic may not work well when the system speed increases. The common practice of using two different capacitance values for decoupling can:

- Increase the RFI/EMI problems
- Reduce the reliability of operation
- Reduce the noise tolerance

Figure 1. Z vs. f for Parts of a Real Capacitor



Each physical component in a design brings with it an additional parasitic components determined by the design and mounting of that component in the system.

Figure 1 shows the behavior of two ideal components, a capacitor and an inductor, that represent the reactive parts of the capacitor shown in Figure 2. When there is no lead inductance or resistance, the resulting capacitive reactance approaches  $0 \Omega$  with increasing frequency. The inductive reactance of the ideal inductor, without any stray capacitance, approaches infinity.

A real capacitor includes both an inductor and resistor in the form of leads, traces, and even ground planes in series with it (Figure 2).

Multi-layer chip capacitors (MLC) have approximately 5 nH of parasitic inductance when mounted on a printed circuit board. The component drawn on the schematic (Figure 2) shows a 22-nF capacitor, the system sees the 22-nF capacitor in series with a 5-nH inductor and a 30-m $\Omega$  resistor.

The impedance curve of Real capacitors resembles the traces marked 22-nF and 100-pF of Figure 3. The shape of these calculated curves match those found in a capacitor manufacturer's data sheets. This means that, in a circuit, a capacitor acts as a low-impedance element only over a limited range of frequencies.

To extend this frequency range, many references propose adding a second capacitor to bypass frequencies outside the limited range of the single capacitor. This approach expects a resulting impedance curve like the solid line marked Expected in Figure 3. This solution, however, is not mathematically sound and has a significant problem at intermediate frequencies.

The intermediate frequency problem comes from the parasitic elements present in the Real circuit shown in Figure 4. The circuit on the left represents the schematic form of a typical decoupling arrangement, a 22-nF and a 100-pF capacitor in parallel.

Conventional wisdom suggests that the 100-pF should decouple the high frequencies, and the 22-nF should decouple the low frequencies. However, the combination results in some unexpected interactions. The circuit on the right in Figure 4 shows a clearer representation of the system, including the parasitic inductances and resistances. It contains all the components necessary to create a resonant tank circuit (with its resulting parallel resonant pole).

Figure 5 shows a combined plot of Z vs. frequency of this circuit. The values given for effective series resistance (ESR; 30 mΩ) and effective series inductance (ESL; 5-nH) are achievable on real PCBs using good layouts and surface-mounted capacitors.

The graph on Figure 5 shows a range of frequencies where this combination of two capacitors results in higher impedance than that of the larger capacitor alone. For the combination shown, this range includes approximately 15 MHz through 175 MHz. Notice the large peak in reactance at 150 MHz is due to parallel resonance of the two capacitors. Any energy from the rest of the system (ICs, clocks, and harmonics), over this intermediate range of frequencies, will see a higher impedance than that of a single 22-nF capacitor alone.

Over this range of frequencies, the parallel combination bypasses less of the energy to ground.

Figure 2. The “Real” Schematic

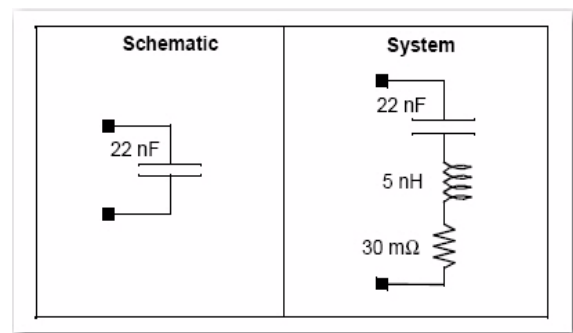


Figure 3. Expected Impedance of “Real” Capacitors

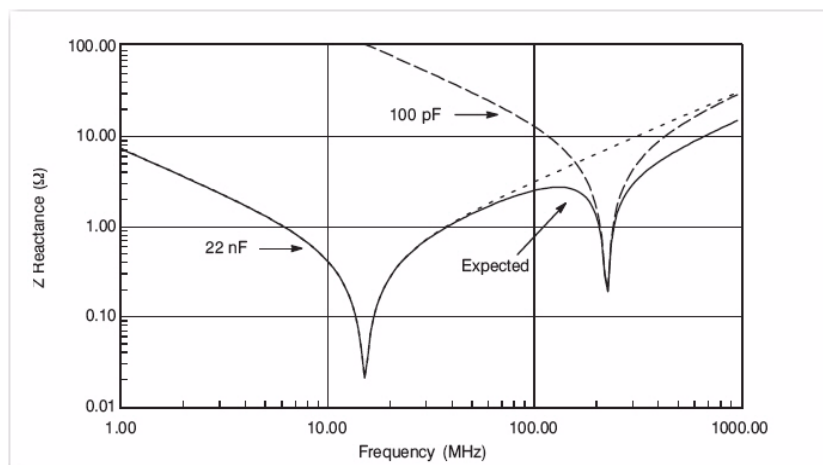
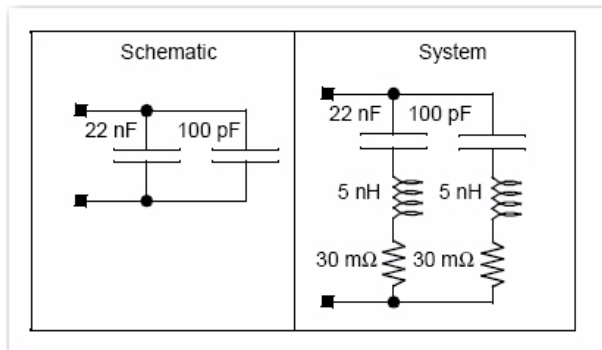


Figure 4. The “Real” Schematic



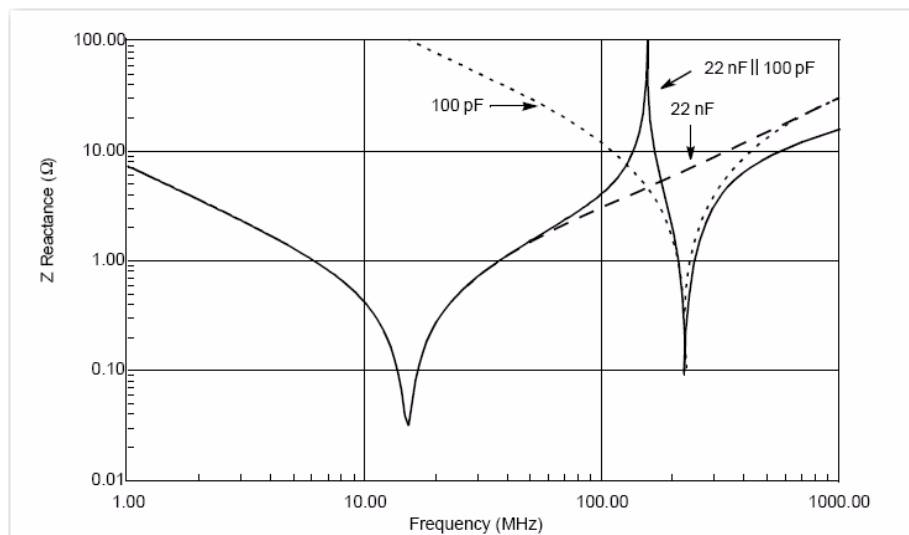
The height of the peak shown in [Figure 5](#) varies inversely with the ESR of the capacitors. As components and board designs improve, the height of the resulting peak increases due to a reduction of the system ESR. The exact shape and location of the parallel resonant peak will vary for each system depending on the design of the printed circuit board (PCB) and choice of capacitors.

## Recommendations

The following recommendations can improve the resulting designs:

- Use only one value of capacitor.
- Choose the capacitor based on the self-resonant characteristics from the manufacturers' data sheet to match the clock rate or expected noise frequency of the design.
- Use as many capacitors as needed for your range of frequencies. As an example, the capacitor shown (22-nF) has a self resonant frequency of approximately 11 MHz, and a useful (less than  $1 \Omega$ ) impedance range of 6 to 40 MHz. Use as many of these as needed to achieve the desired level of decoupling.
- Use a minimum of one capacitor per power pin, placed as physically close to the to the power pins of the IC as possible to reduce the parasitic inductance.
- Keep lead lengths on the capacitors below 6 mm between the capacitor end caps and the ground or power pins.
- Place the bypass capacitors on the same side of the PCB as the ICs. [Figure 6](#) shows an example of a recommended layout for a HOTLink<sup>®</sup> Transmitter and Receiver.

Figure 5. Real Z vs. f for parallel 22-nF and 100-pF Capacitors



A special note about Figure 6: in both of the layouts, only one connection is made to the VCC plane. This is done so that the noise, generated both inside the IC and external to this portion of the circuit, must go through the single to the power plane. The additional reactance helps to keep the noise from spreading throughout the rest of the system.

While HOTLink parts tolerate a fairly large amount of VCC noise, the absolute best performance is achieved by following the recommendations listed in this application note.

Figure 6. Sample Layouts

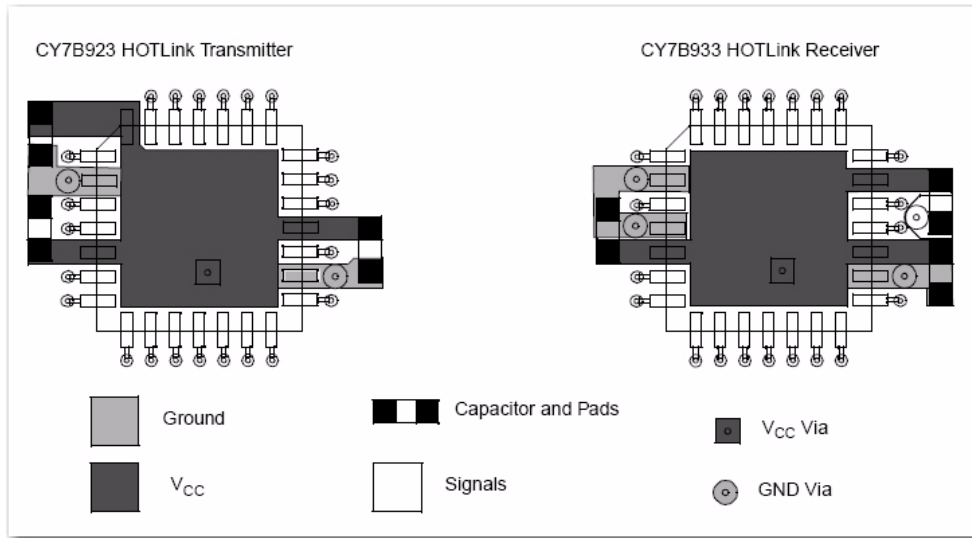
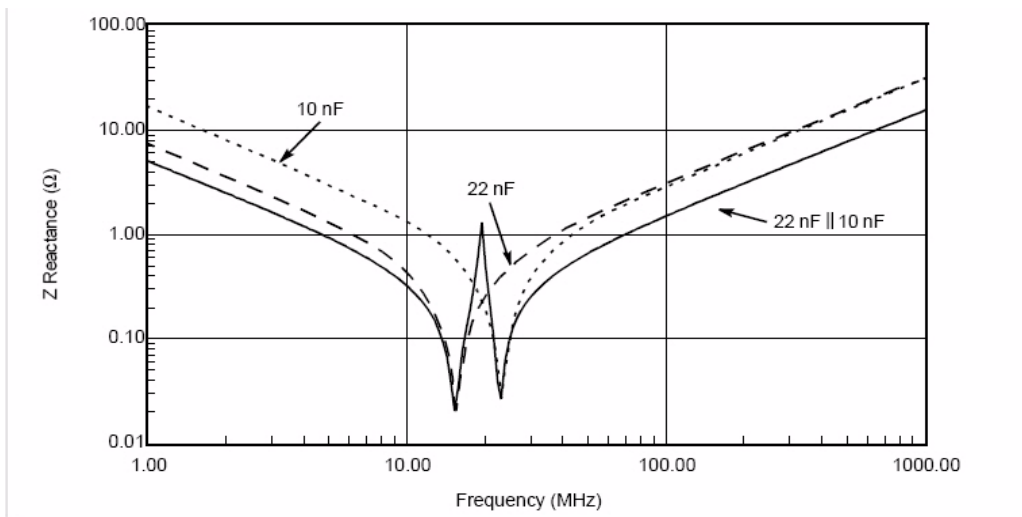


Figure 7. Real Z vs f for Parallel 22-nF and 10-nF Capacitors



## What About Multiple Clocks?

When the design calls for multiple clock frequencies, use the same raised power plane structures as shown in [Figure 6](#), and use the correct value of capacitor for each section, maintaining only one value per section. Other forms of power supply isolation may be found in the Cypress application note “HOTLink Design Considerations, [AN1162](#)” in the discussion on Power Distribution Requirements for Optical Drivers.

The isolation provided by the slotted power plane keeps the noise of one section away from the sensitive parts of the other sections, and allows the separation of the capacitor values.

## What About Variable Clock Frequencies?

Bypassing ICs when the clock rate changes over a wide range of frequencies presents the most difficult situation covered here. Fortunately, most data communications applications use only a single clock rate.

When the range of operation of a single design covers a large range of frequencies, placing two capacitors that are within approximately 2:1 of each other in capacitance results in a wider low-impedance zone and allows a broad range of bypass frequencies. Notice in [Figure 7](#) that the peak in the reactance still occurs, but that the maximum impedance stays well below 1.5 W and that the usable range (less than 1.5 W) now extends from approximately 3.25 MHz to 100 MHz. Use this multiple decoupling capacitor method only when a wide range of frequencies must be bypassed around a single integrated circuit and adequate range cannot be achieved by a single capacitor. Again, the capacitors must remain within a 2:1 range to prevent the reactance peak from exceeding useful limits.

## Summary

Applying these techniques resulted in improving the measured optical margin of a HOTLink-based optical link card (OLC) by about 1 dB. It simplifies the Bill of Materials by using only one value instead of two. Finally, using only one value of capacitor provided the best jitter measurements of the HOTLink Transmitter.

## Document History

Document Title: Using Decoupling Capacitors – AN1032

Document Number: 001-19299

Revision	ECN	Orig. of Change	Submission Date	Description of Change
**	1408983	SAAC	09/19/2007	New Document
*A	3059376	SAAC	10/14/2010	Reviewed Content – No change
*B	3412600	SAAC	10/19/2011	Template update Converted from FrameMaker to Word
*C	4559299	SAAC	11/03/2014	Sunset Review Updated template

## Worldwide Sales and Design Support

Cypress maintains a worldwide network of offices, solution centers, manufacturer's representatives, and distributors. To find the office closest to you, visit us at [Cypress Locations](#).

### Products

Automotive	<a href="http://cypress.com/go/automotive">cypress.com/go/automotive</a>
Clocks & Buffers	<a href="http://cypress.com/go/clocks">cypress.com/go/clocks</a>
Interface	<a href="http://cypress.com/go/interface">cypress.com/go/interface</a>
Lighting & Power Control	<a href="http://cypress.com/go/powerpsoc">cypress.com/go/powerpsoc</a> <a href="http://cypress.com/go/plc">cypress.com/go/plc</a>
Memory	<a href="http://cypress.com/go/memory">cypress.com/go/memory</a>
PSoC	<a href="http://cypress.com/go/psoc">cypress.com/go/psoc</a>
Touch Sensing	<a href="http://cypress.com/go/touch">cypress.com/go/touch</a>
USB Controllers	<a href="http://cypress.com/go/usb">cypress.com/go/usb</a>
Wireless/RF	<a href="http://cypress.com/go/wireless">cypress.com/go/wireless</a>

### PSoC<sup>®</sup> Solutions

[psoc.cypress.com/solutions](http://psoc.cypress.com/solutions)  
PSoC 1 | PSoC 3 | PSoC 4 | PSoC 5LP

### Cypress Developer Community

[Community](#) | [Forums](#) | [Blogs](#) | [Video](#) | [Training](#)

### Technical Support

[cypress.com/go/support](http://cypress.com/go/support)

PSoC is a registered trademark and PSoC Creator is a trademark of Cypress Semiconductor Corp. All other trademarks or registered trademarks referenced herein are the property of their respective owners.



Cypress Semiconductor      Phone : 408-943-2600  
198 Champion Court      Fax : 408-943-4730  
San Jose, CA 95134-1709      Website : [www.cypress.com](http://www.cypress.com)

© Cypress Semiconductor Corporation, 2007- 2014. The information contained herein is subject to change without notice. Cypress Semiconductor Corporation assumes no responsibility for the use of any circuitry other than circuitry embodied in a Cypress product. Nor does it convey or imply any license under patent or other rights. Cypress products are not warranted nor intended to be used for medical, life support, life saving, critical control or safety applications, unless pursuant to an express written agreement with Cypress. Furthermore, Cypress does not authorize its products for use as critical components in life-support systems where a malfunction or failure may reasonably be expected to result in significant injury to the user. The inclusion of Cypress products in life-support systems application implies that the manufacturer assumes all risk of such use and in doing so indemnifies Cypress against all charges.

This Source Code (software and/or firmware) is owned by Cypress Semiconductor Corporation (Cypress) and is protected by and subject to worldwide patent protection (United States and foreign), United States copyright laws and international treaty provisions. Cypress hereby grants to licensee a personal, non-exclusive, non-transferable license to copy, use, modify, create derivative works of, and compile the Cypress Source Code and derivative works for the sole purpose of creating custom software and or firmware in support of licensee product to be used only in conjunction with a Cypress integrated circuit as specified in the applicable agreement. Any reproduction, modification, translation, compilation, or representation of this Source Code except as specified above is prohibited without the express written permission of Cypress.

Disclaimer: CYPRESS MAKES NO WARRANTY OF ANY KIND, EXPRESS OR IMPLIED, WITH REGARD TO THIS MATERIAL, INCLUDING, BUT NOT LIMITED TO, THE IMPLIED WARRANTIES OF MERCHANTABILITY AND FITNESS FOR A PARTICULAR PURPOSE. Cypress reserves the right to make changes without further notice to the materials described herein. Cypress does not assume any liability arising out of the application or use of any product or circuit described herein. Cypress does not authorize its products for use as critical components in life-support systems where a malfunction or failure may reasonably be expected to result in significant injury to the user. The inclusion of Cypress' product in a life-support systems application implies that the manufacturer assumes all risk of such use and in doing so indemnifies Cypress against all charges.

Use may be limited by and subject to the applicable Cypress software license agreement.